

# Mi306

## Automatic & Logging EC/TDS/NaCl Temp Meter

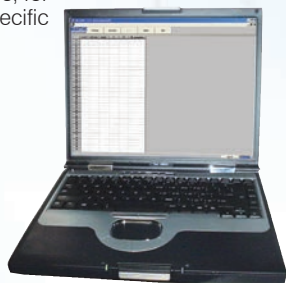
**Mi306** is a waterproof portable logging microprocessor-based Conductivity/TDS/NaCl/temperature meter. The autoranging feature of the EC and TDS ranges automatically sets the meter to the scale with the highest possible resolution.

The Auto Endpoint (HOLD) feature automatically freezes the display when a stable reading is reached. The measurements are automatically (ATC) or manually (MTC) compensated for temperature.

The temperature coefficient value is user selectable. It is possible to disable the temperature compensation and measure the actual conductivity (NoTC).

The Battery Error Preventing System (BEPS) switches the meter off when the batteries are too weak to support proper function. The meter can store measurements in memory by logging function for retrieval at a later time upon user request.

**Mi306** also allows data transfer to computer through the RS232 port. Double LCD displays, for simultaneous readings of the specific conductivity and temperature.



- Years warranty **2**
- LOG
- RS232
- ATC
- MTC
- Software CD
- Self diagnostics
- CE

Specifications	Mi306
Range (Autoranging) EC	0.00 to 29.99 µS/cm; 30.0 to 299.9 µS/cm; 300 to 2999 µS/cm;
(Autoranging) TDS	3.00 to 29.99 mS/cm; 30.0 to 200.0 mS/cm; up to 500.0 mS/cm actual(*) EC
NaCl Temp	0.00 to 14.99 mg/L; 15.0 to 149.9 mg/L; 150 to 1499 mg/L; 1.50 to 14.99 g/L; 15.0 to 100.0 g/L; up to 400.0 g/L actual(*) TDS (with 0.80 factor)
Resolution EC	0.01 µS/cm (from 0.00 to 29.99 µS/cm); 0.1 µS/cm (from 30.0 to 299.9 µS/cm); 1 µS/cm (from 300 to 2999 µS/cm); 0.01 mS/cm (from 3.00 to 29.99 mS/cm); 0.1 mS/cm (over 30.0 mS/cm)
TDS	0.01 mg/L (from 0.00 to 14.99 mg/L); 0.1 mg/L (from 15.0 to 149.9 mg/L); 1 mg/L (from 150 to 1499 mg/L); 0.01 g/L (from 1.50 to 14.99 g/L); 0.1 g/L (over 15.0 g/L)
NaCl Temp	0.1 % 0.1°C
Accuracy EC	±1% of reading (±0.05 µS/cm or 1 digit whichever greater)
TDS	±1% of reading (±0.053 ppm or 1 digit whichever greater)
NaCl Temp	±1% of reading ±0.4°C
Typical EMC Deviation EC	±1% of reading
TDS	±1% of reading
NaCl Temp	±1% of reading ±0.1°C
Logging	up to 250 records, LOG on demand
Communication	with PC through RS232 port
EC Calibration	1 point with 7 memorized buffers: 0 µS/cm, 84 µS/cm, 1413 µS/cm, 5000 µS/cm, 12880 µS/cm, 80000 µS/cm, 111800 µS/cm
NaCl Calibration	1 point with MA9066 buffer (optional)
Temperature Compensation	automatic or manual from 0 to 60°C (can be disabled to measure actual conductivity and TDS)
Temperature Coefficient	0.00 to 6.00 %/°C (for EC and TDS only) Default value is 1.90%/°C
TDS Factor	0.40 to 0.80 (default value is 0.50) reference Temperature: 20 or 25°C
Probe	MA814D/1 EC probe with built-in temperature sensor & 1 m cable (included)
Auto-off	after 5 minutes of non use (can be disabled)
Battery Type / Battery Life	1 x 9V Battery (included) / approx. 100 hours of use
Casing	IP 67
Environment	0 to 50°C / 32 to 122°F; max RH 100%
Dimensions	200 x 85 x 50 mm
Weight	280 g

(\*) Uncompensated conductivity (or TDS) is the conductivity (or TDS) value without temperature compensation.

### Accessories



- MA814D/1** 4-ring EC probe with DIN connector and 1 m cable
- M10030B** 12880 µS/cm calibration solution, 20 mL sachet, 25 pcs.
- M10031B** 1413 µS/cm calibration solution, 20 mL sachet, 25 pcs.
- M10035B** 111.8 mS/cm calibration solution, 20 mL sachet, 25 pcs.
- MA9060** 12880 µS/cm calibration solution, 230 mL bottle
- MA9061** 1413 µS/cm calibration solution, 230 mL bottle
- MA9063** 84 µS/cm calibration solution, 230 mL bottle
- MA9065** 111.8 mS/cm calibration solution, 230 mL bottle
- MA9066** 100% NaCl calibration solution, 230 mL bottle
- MA9069** 5000 µS/cm solution, 230 mL bottle
- MA9351** RS232 connection cable (5 to 9 pin) with 2 meters cable (for Mi306)
- Mi5200** Application Software

### Ordering Information

- Mi306** is supplied in a hard carrying case complete with
- **MA814D/1** EC/TDS/NaCl/Temp probe with DIN connector and 1 meter cable
  - **MA9060** 12880 µS/cm calibration solution
  - **Mi5200** Application Software
  - **MA9351** RS232 connection cable with 2 meters cable
  - Instruction manual



**FieldTech Solutions**

Tel - +61 3 9676 9664

37 Wirraway Drive, Port Melbourne, VIC.3207

Email - sales@fieldtechsoln.com